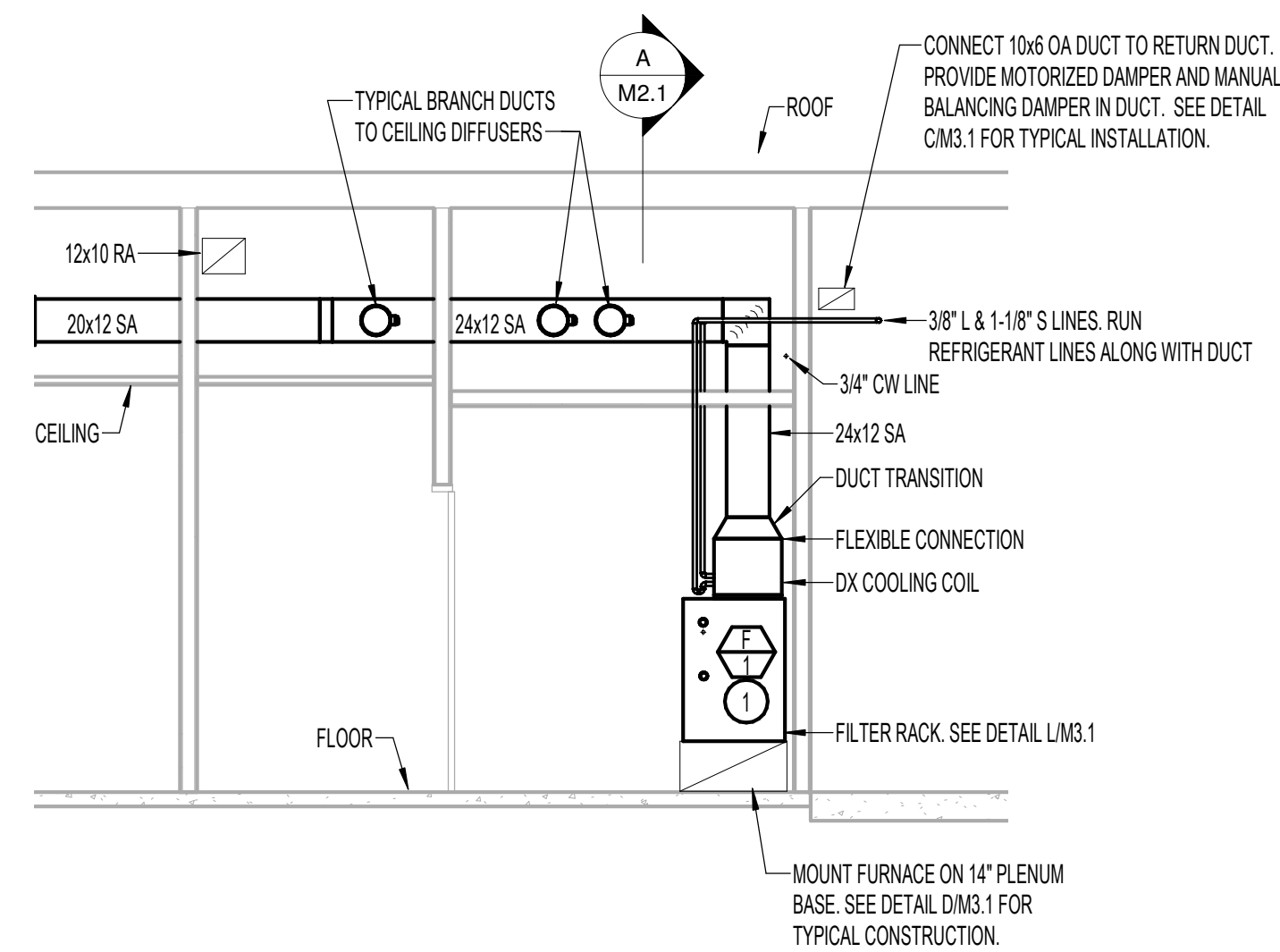
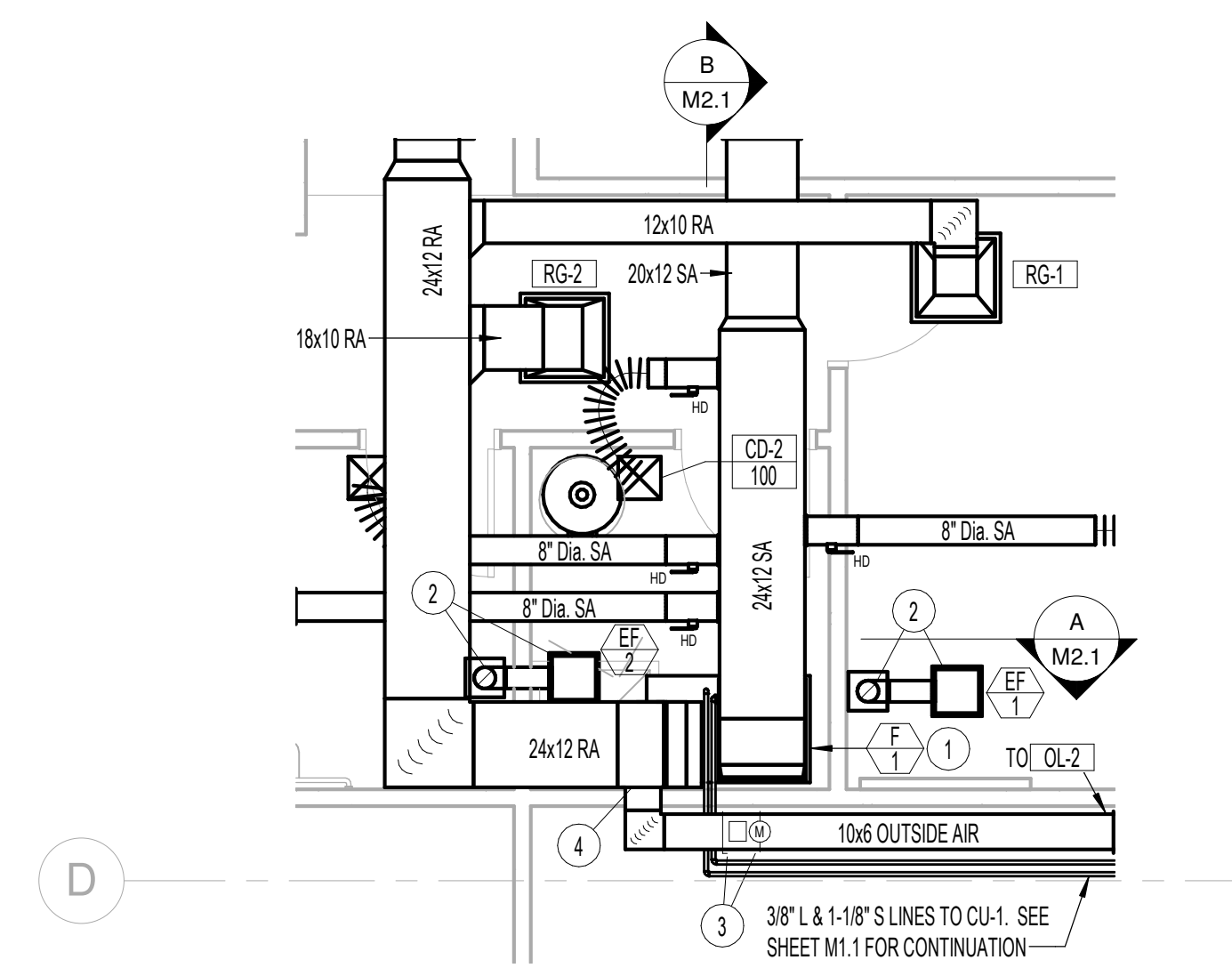


MECHANICAL SECTION
 SCALE: 1/4" = 1'-0"



MECHANICAL SECTION
 SCALE: 1/4" = 1'-0"



LARGE SCALE MECHANICAL ROOM
 SCALE: 1/4" = 1'-0"

PLAN NOTES:

- 1 PROVIDE AND INSTALL GAS FIRED FURNACE COMPLETE AS SPECIFIED COMPLETE WITH DX COOLING COIL. MOUNT FURNACE ON 14" HIGH RETURN PLENUM WITH EXTERNAL FILTER SECTION. (REFER TO DETAIL DM3.1 FOR PLENUM CONSTRUCTION AND TO DETAIL LM3.1 FOR FILTER RACK CONSTRUCTION.) COORDINATE FURNACE, PLENUM AND DUCTWORK LOCATION WITH PLUMBING FIXTURES AND PIPING. (REFER TO DETAIL QM3.1 FOR TYPICAL FURNACE PIPING CONNECTIONS.)
- 2 PROVIDE AND INSTALL CEILING MOUNTED EXHAUST FAN AS SPECIFIED. RUN 6" DIA. DUCT UP THRU METAL ROOF TO ROOF CAP. REFER TO DETAIL EM3.1 FOR TYPICAL INSTALLATION. MULTIPLE EXHAUST DUCTS MAY BE COMBINED TO SINGLE ROOF CAP WHERE POSSIBLE. REFER TO DETAIL JM3.1 FOR MULTIPLE DUCTS TO SINGLE ROOF CAP APPLICATIONS.
- 3 PROVIDE MOTORIZED DAMPER AND MANUAL BALANCING DAMPER IN OUTSIDE AIR DUCT. REFER TO DETAIL CM3.1 FOR TYPICAL INSTALLATION. INTERLOCK MOTORIZED DAMPER WITH FURNACE.
- 4 CONNECT 10x6 OUTSIDE AIR DUCT TO RETURN DUCT ABOVE CEILING.

DATE

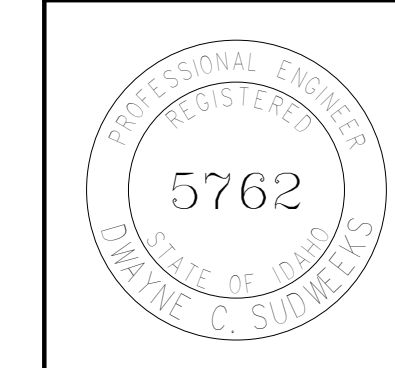
A NEW FACILITY FOR:
 BURLEY HIGHWAY DISTRICT
 LARGE SCALE PLANS & DETAILS

Laughlin Ricks Architecture
 architecture/planning
 935 Shoshone Street North * Twin Falls, Idaho 83301
 (208) 736-8050 Fax: (208) 733-0950

GENERAL NOTES:

- A- THE CONTRACTOR SHALL CHECK AND VERIFY ALL DIMENSIONS AND CONNECTIONS ON THE JOB SITE. ALL WORK SHALL BE EXECUTED FROM MEASUREMENTS TAKEN AT THE SITE.
- B- THE MECHANICAL CONTRACTOR SHALL BE RESPONSIBLE TO INSURE PROPER CODE CLEARANCES FOR ELECTRICAL AND MECHANICAL ACCESS WHEN INSTALLING ANY EQUIPMENT SUPPLIED BY THE MECHANICAL CONTRACTOR.
- C- IT IS CRITICAL THAT THIS CONTRACTOR COORDINATE EQUIPMENT LOCATIONS WITH PIPING, DUCTWORK, ELECTRICAL CONDUIT AND BUILDING STRUCTURE TO INSURE CODE COMPLIANCE.
- D- CEILING DIFFUSERS ARE SHOWN IN APPROXIMATE LOCATIONS. REFER TO LIGHTING PLANS AND REFLECTED CEILING PLAN FOR EXACT LOCATIONS.
- E- DUCT DIMENSIONS CALLED OUT ON DRAWINGS ARE INSIDE FREE AREA DIMENSIONS. ACOUSTICAL DUCT LINER ARE TO BE ADDED TO OVERALL MEASUREMENTS.
- F- ALL DUCTWORK AND PIPING WHICH PASSES THRU FIRE RATED WALLS TO BE FIRE STOPPED WITH APPROVED FOAM OR SEALANT. REFER TO SPECIFICATIONS FOR APPROVED MANUFACTURES.

ORIGINAL DRAWING SIGNED BY: DWAYNE C. SUDWEEKS
 DATE ORIGINAL SIGNED: April 1, 2019 ORIGINAL ON FILE AT:
 ENGINEERED SYSTEMS ASSOCIATES 1355 EAST CENTER,
 POCATELLO, IDAHO 83201



Engineered Systems Associates
 1355 EAST CENTER
 POCATELLO, IDAHO 83201
 PHONE: (208) 233-0501
 FAX: (208) 233-0529
 EMAIL: esa@engsystems.com
 ESA JOB NUMBER: 18023

DATE: 11/30/18
 MLJ DCS
 Drawn Checked

M2.1